



To,

GM Restructuring  
BSNL Corporate Office, New Delhi.

No. MOB-8/Staff/2015(part) dated: 30.01.2020.

Subject: Declaration of Nodal centers as Business Areas - reg.

At present all four Nodal centre of GSM (West, North, East & south zones) are handling very critical applications related with mobile operation catering mobile services to all LSAs in BSNL. Summary of major equipments handled are as follows:

I. All 4 Nodal centres are handing customers as below:-

	East	West	North	South	Total
Prepaid	1,89,49,725	1,91,02,916	3,81,42,846	3,90,12,423	11,52,07,910
Postpaid	6,81,502	4,31,431	5,90,060	12,87,169	29,90,162
Total	1,96,31,227	1,95,34,347	3,87,32,906	4,02,99,592	11,81,98,072

- Zonal IN systems with DR for 115,207,910 Prepaid subscribers
- Zonal Billing Systems for 2,990,162 post-paid subscribers along with Inter Operator billing
- 2G/3G/4G Packet core Network elements for providing mobile data services (viz. GGSN, PCRF, Firewall, Border Gateway for roaming etc). Total 3G+4G data is 77,855,644 GB of a month of December-2019 and monthly volume growth 3G&4G is 9,542,781 GB.
- IP Multimedia Sub-system (IMS) network for providing 4G-Volte service.
- SMSGs (P2P & A2P)
- Equipment Identity Register (EIR)
- OTA server
- Diameter Router Agent (DRA)
- IP-Logger for providing security data to LEAs on request.
- FMCC (Fraud Management)

2. Moreover, recently many circle specific equipments also have been installed in Nodal Centres for providing 2G/3G/4G/4G-Volte services to BSNL subscribers. Details of such elements are as follows:

- Planning Tools,
- OMCR,
- SON (Self Optimizing Network)
- CSCFs (Call Session Control Function) viz. P-CSCF, I-CSCF & S-CSCF
- TAS (Telecom Application Server)

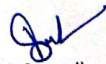
3. As nodal centers are playing a major part in providing latest mobile services to BSNL mobile subscribers and its operation & maintenance on 24X7 period. Also, Nodal centers also play a major part in revenue generations. Many times decisions are need to be taken on a fast track manner, but as currently all nodal centers are under their respective circle and same generally delays due to lengthy channel/process.

5. CMTS Nodal Centres deserves to be an independent Business area (BA) and requires infrastructure just like LSA for providing full fledged functionality as below

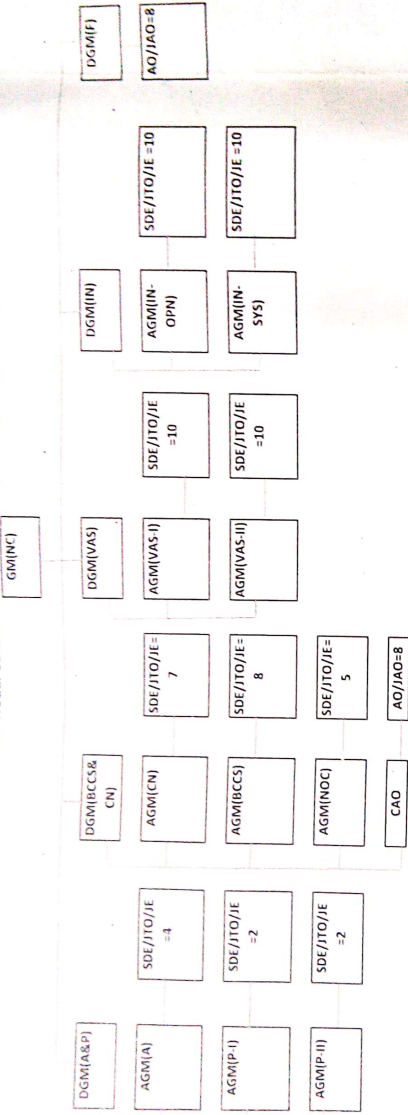
Zone	CGM	Location
North	Punjab Circle	Chandigarh
South	Tamilnadu Circle	Trichy
East	Kolkata TD	Kolkata
West	Maharastra Circle	Pune

Draft Organisational Structure of all 4 nodal centre is attached at Annexure A.

This is issued with the approval of Director (CM), BSNL.

  
(L.M. Sanwal)  
PGM(NWO-CM-1)

Organisation Chart for Nodal Centre North (Chandigarh)/ West (Pune) / South (Trichi)



Organisation Chart Nodal Centre East (Kolkata)

